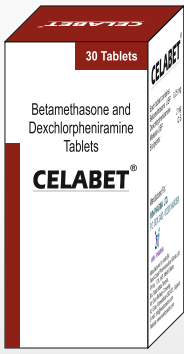


WEST-COAST

SADC (EAST AFRICA) TOP SELLING PRODUCTS LIST



Nutrition / Health / Beauty Supplements



Each tablet contains:
 Betamethasone USP 0.25 mg
 Dexchlorpheniramine Maleate USP 2 mg
 Excipients: Q.S.

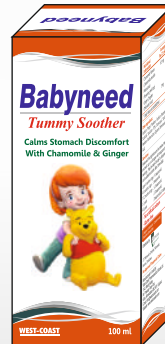


Supplement Facts		
Serving Size: 1 Tablet	Serving Per Container: 60	
	Amp Per Table	% Daily Use
Vitamin A(as Acetate 3500 IU)	7 mg	7%
Vitamin C	60 mg	100%
Vitamin D3 (1000 IU)	25 µg(mcg)	250%
Vitamin E(Acetate 50% 30 IU)	27 mg	100%
Vitamin K	25 µg(mcg)	31%
Vitamin B1 (Thiamin)	1.5 mg	100%
Vitamin B2(Riboflavin)	1.7 mg	100%
Vitamin B3(Niacin)	20 mg	100%
Vitamin B6(Pyridoxine Hydrochloride)	2 mg	100%
Folic Acid	400 µg(mcg)	100%
Vitamin B12(Cyanocobalamin)	6 µg(mcg)	100%
Vitamin B7(Biotin)	30 µg(mcg)	10%
Vitamin B5(Calcium D-Pantothenate)	10 mg	100%
Calcium(as Calcium Carbonate)	200 mg	20%
Iron(as Ferrous Fumarate)	18 mg	100%
Iodine(as Potassium Iodide)	150 µg(mcg)	100%
Magnesium(as Magnesium Oxide)	50 mg	13%
Zinc(as Zinc Sulfate)	11 mg	73%
Selenium(as Sodium Selenite)	55 µg(mcg)	79%
Copper(as Copper Sulphate)	1.5 mg	25%
Manganese(as Manganese Sulphate)	2.3 mg	115%
Chromium(as Chromium Picolinate)	35 µg(mcg)	29%
Molybdenum(as Sodium Molybdate)	45 µg(mcg)	66%
Potassium(as Potassium Chloride)	80 mg	2%

*Daily value not established



Nutritional Information	Average per 5 ml
Vitamin A (as Acetate 443 IU)	886 µg(mcg)
Vitamin D (as D3 280 IU)	7 µg(mcg)
Vitamin E (as Acetate 50% 5.55IU)	5 mg
Vitamin C	30 mg
Vitamin B1 (as Thiamin)	0.5 mg
Vitamin B2 (as Riboflavin)	0.8 mg
Vitamin B3 (as Niacin)	6 mg
Vitamin B6 (as Pyridoxine Hydrochloride)	0.5 mg
Vitamin B12 (as Cyanocobalamin)	1 µg(mcg)
Vitamin B5 (as Calcium D-Pantothenate)	2 mg
Folic acid	80 µg(mcg)
Iron (as Ferrous Fumarate)	4 mg
Copper (as Cupric Sulphate)	150 µg(mcg)
Malt Extract	500 mg
Zinc Acetate	2.5 mg



Nutritional Information	Average Per 2.5 ml	% EC NRV*
Chamomile Flowers (Chamomilla recutita Matricaria)	6.5 mg	*
(Flowering herb top)		
Ginger (Zingiber Officinale) (root)	3 mg	*

* Daily Value not established



Each 5 ml Contains / Chaque 5ml contient :
 Ambroxol Hydrochloride BP 15 mg
 Salbutamol Sulfate BP Eq. To Salbutamol 1 mg
 Guaifenesin BP 50 mg
 Mentholated Syrup Base q.s.



Each 5 ml contains:

Extract Of Adulsa (Athalodia Yascia) (Leaves) Bh.N	30mg
Extract Of Jeshmath (Glycyrrhiza Glabra) (Roots) Bh.N	30mg
Extract Of Tulsi (Ocimum Sanctum) (Leaves) Bh.N	50mg
Extract Of Ginger (Zingiber Officinale) (Rhizomes) Bh.N	10mg
Extract Of Pudina Ka Phool (Mentha Anvensis) (Leaves) Bh.N	3mg
Extract Of Aloevera (Aloe Barbadensis) (Leaves) Bh.N	25mg
Extract Of Haridra (Curcuma Longa) (Rhizome) Bh.N	25mg
Extract Of Pushkara (Inula Racemosa) (Root) Bh.N	5mg
Extract Of Bibhaka (Terminalia Belerica) (Fruits) Bh.N	10mg
Extract Of Chanak Baha (Piper Cubeba) (Dried Umrripe Berries) Bh.N	5mg
Extract Of Bruhal (Solanum Indicum) (Root) Bh.N	10mg
Extract Of Bharang (Clerodendrum Serratum) (Root) Bh.N	100mg
Extract Of Sonalata (Ephedra Gerardiana) (Stem) Bh.N	100mg
Extract Of Kantkari (Solanum Xanthocarpum) (Whole Plant) Bh.N	50mg
Nigiri Oil (Eucalyptus Globules) (Oil) Bh.N	0.003ml



Composition:
 Chaque 5ml contient/Each 5 ml contains
 Desloratadine 2.5 mg
 Flavoured syrup base q.s.
 Colour : Sunset yellow FCF



Nutritional Information	Average Per 5 ml
Vitamin C	50 mg
Zinc (as Zinc Sulphate Monohydrate)	10 mg



Composition:
 7.1% w/v Chlorhexidine Gluconate Aqueous Base q.s.



Composition :

Ofloxacin / Ofloxacin.....	USP..... 0.3% W/V
Dipropionate de bécloéthasone /	
Béclométhasone dipropionate.....	USP. 0.025% W/V
Clostrimazole.....	USP.....1% W/V
Chlorhydrate de Lidocaine /	
Lidocaine Hydrochloride.....	USP.....2% W/V
Dans Base de Glycérine USP et Propylène	
de Glycol / In Glycerin USP and	
Propylene Glycol USP base	q.s.



Composition:
 Xylometazoline Hydrochloride USP.....0.1% w/v
 Preservative: Benzalkonium Chloride USP.....0.02 % W/V



Composition:
 Xylometazoline Hydrochloride USP.....0.05% w/v
 Preservative: Benzalkonium Chloride USP.....0.011 % W/V



Serving Size : 5 ml

Ingredients	Average per 5 ml
Ivy Leaves Extract	35 mg



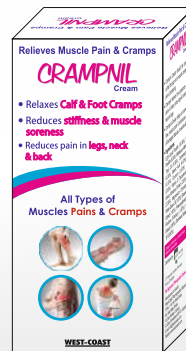
Serving Size : 1 ml

Ingredients	Average per ml
Ivy Leaves Extract	7 mg



Serving Size : 1 ml

Ingredients	Average per ml
Ivy Leaves Extract	7 mg

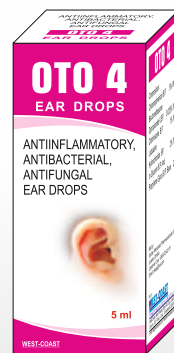


Ingredients:
 Light Liquid Paraffin (10.00%), White Soft Paraffin (8.00%), Metaleuca Allernifolia (Tea Tree) Oil (5.00%), Cetostearyl Alcohol (4.00%), Stearic Acid (4.00%), Menthol (4.00%), Glycerin (3.00%), Camphor (3.00%), Vitamin E (Tocopherol) (2.50%), Amica Montana Extract (2.00%), Arginine (2.00%), Magnesium Chloride (1.00%), Winter Green Oil (1.00%), Boswellia Serrata Extract (1.00%), Phenoxyethanol (1.00%), Perfume (Fantasy) (1.00%), Aloe Vera Extract (0.50%), Demineral Water (Q.S. Up To 100.00%).



Composition:

Lavang ka tel (Syzygium aromacicum) (Oil) AB	35%
Karpoor (Cinnamomum camphora) (Crystal) AB	10%
Lobhan (Styrax benzoin) (Resin) AB	7%
Alovera Ext (Aloe Vera) (Leaf Pulp) AB	3%
Oil Base	Q.S.



Composition :

Chloramphenicol B.P.	5% W/V
Beclomethasone Dipropionate USP.	0.025% W/V
Clotrimazole B.P.	1% W/V
Lidocaine Hydrochloride BP.	2% W/V
In Glycerin B.P. And Propylene Glycol B.P. Base	Q.S.



Composition:
 Levonorgestrel B.P.....1.5 mg
 Excipients q.s for1 comprimé/tablet
 Excipient à effet nolâtre/excipient with a recognized effect/lactose monohydrate.



Nutritional Information	Average per Capsule	% EC NRV*
Vitamin B6 (as Pyridoxine Hydrochloride)	5 mg	357
Folic Acid	400 µg(mcg)	200
Vitamin B12 (Cyanocobalamin)	10 µg(mcg)	400
Iron (as Ferrus Fumarate)	17 mg	121
Zinc (as Zinc Sulphate)	12 mg	120
Copper (as Cupric Sulphate)	1000 µg(mcg)	100

*NRV = Nutrient Reference Value, µg = microgram
 mg = milligram, IU = International Units.



Nutritional Information	Average Per Tablet
Vitamin B1(Thiamin)	5 mg
Vitamin B2 (Riboflavin)	1.4 mg
Vitamin B3 (Niacin)	16 mg
Vitamin B6 (Pyridoxine Hydrochloride)	5 mg
Folic Acid	200 µg(mcg)
Vitamin B12 (cyanocobalamin)	50 µg(mcg)
Biotin	25 µg(mcg)
Pantothenic Acid	6 mg

*NRV = Nutrient Reference Value
** Daily Value Not Established

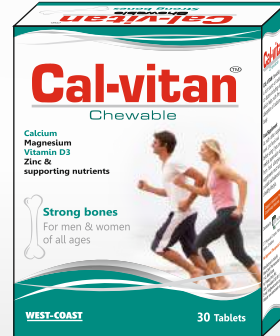


Nutritional Information	Average per Capsule
Chitosan	225 mg
Garcinia Cambogia (60%)	175 mg
Chromium (As Chromium Picolinate)	200 µg(mcg)
Vitamin E (50% Acetate 27.77 IU)	25 mg
Selenium (As Sodium Selenite)	50 µg(mcg)
Zinc (As Zinc Sulphate)	7.5 mg



Nutritional Information	Average Per Tablet	% EC NRV*
Vitamin D (as D3 400 IU)	10 µg(mcg)	200
Vitamin E (50% Acetate 4.44 IU)	4 mg	33
Vitamin K	70 µg(mcg)	98
Vitamin C	40 mg	50.98
Vitamin B1 (Thiamin)	3 mg	273
Vitamin B2 (Riboflavin)	2 mg	143
Vitamin B3 (Niacin)	20 mg	155
Vitamin B6 (Pyridoxine Hydrochloride)	10 mg	714
Folic Acid	400 µg(mcg)	200
Vitamin B12 (Cyanocobalamin)	6 µg(mcg)	240
Vitamin B7 (Biotin)	150 µg(mcg)	300
Vitamin B5 (as Calcium-D-Pantothenate)	6 mg	100
Magnesium (as Magnesium Oxide)	150 mg	40
Iron (as Ferrous Fumarate)	17 mg	121
Zinc (as Zinc Sulphate)	15 mg	150
Copper (as Cupric Sulphate)	1000 µg(mcg)	100
Selenium (as Sodium Selenite)	30 µg(mcg)	55
Iodine (as Potassium Iodide)	140 µg(mcg)	93
Natural Mixed Carotenoids (20%)	2 mg	**

*NRV = Nutrient Reference Value
** Daily Value Not Established

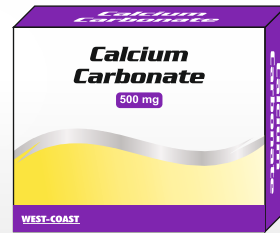


Nutritional Information	Average per tablet	% EC NRV*
Vitamin D (as D3 200 IU)	5 µg(mcg)	100
Calcium (as Calcium Carbonate)	400 mg	50
Magnesium (as Magnesium Oxide)	150 mg	40
Zinc (as Zinc Sulphate)	5 mg	50
Copper (as Cupric Sulphate)	500 µg(mcg)	50
Manganese (as Manganese Sulphate)	0.25 mg	12.5
Selenium (as Sodium Selenite)	25 µg(mcg)	45.5
Boron (as Boron Proteonate)	0.3 mg	-

*NRV = Nutrient Reference Value, µg = microgram
mg = milligram, IU = International Units.



Nutritional Information	Average Per Tablet
Vitamin C (Ascorbic Acid/ Sodium Ascorbate)	500 mg
Zinc Sulfate (eq. to Elemental Zinc 5 mg)	13.75 mg



Nutritional Information	Average Per Tablet
Calcium Carbonate (eq. to Elemental Calcium 200 mg)	500 mg



Each Sachet Contains:	
Babuna Extract (Maticaria Chamomile) (Flower) Bh.N	3.0% w/w
Excipients	q.s.



Nutritional Information	Average per tablet
Zinc Sulfate (eq. to Elemental Zinc)	20 mg



Each uncoated tablet contains:	
Norethisterone BP	5 mg.
Excipients	q.s.



Composition :	
chaque capsule contient/ Each hard gelatin capsule contains:	
Pregabalin BP	75 mg
Excipients	q.s.



Composition:	
Each tablet contains / chaque comprimé contient	
Desloratadine USP	5 mg
Excipients	q.s.



Each tablet contains :	
Levonorgestrel BP	0.75 mg.



Each Tablet Contains:
 Acetaminophen USP 250 mg
 Aspirin USP 300 mg
 Caffeine USP 30 mg
 Excipients q.s.



Cada Cápsula dura de Gelatina Contém:
 Danazol USP 200 mg.
 Excipientes q.b.



Nutritional Information	Average per Tablet
Calcium-4-methyl-2-oxo-valerate (D-ketoanalogue to leucine, calcium salt)	101 mg
Calcium-3-methyl-2-oxo-butyrate (D-ketoanalogue to valine, calcium salt)	86 mg
Calcium-2-oxo-3-phenylpropanoate (D-ketoanalogue to phenylalanine, calcium salt)	68 mg
Calcium-3-methyl-2-oxo-valerate (L-ketoanalogue to isoleucine, calcium salt)	67 mg
Calcium-DL-2-hydroxy-4-(methylthio) butyrate (D-hydroxyanalogue to methionine, calcium salt)	59 mg
L-Lysine Acetate	105 mg
L-Threonine	53 mg
L-Histidine	38 mg
L-Tyrosine	30 mg
L-Tryptophan	23 mg



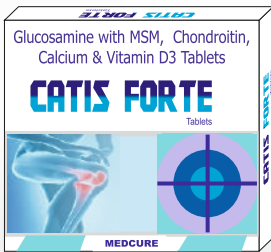
Each tablet contains / Chaque comprimé contient :
 Drotaverine hydrochloride 80 mg
 Paracetamol BP 500 mg
 Excipients q.s.



Nutritional Information	Average per Tablets
Iron (Ferrous ascorbate)	40 mg
Folic Acid	1.0 mg
Zinc (Zinc sulfate)	22.5 mg
Vitamin B12 (Cyanocobalamin)	15 mcg



Each Tablet Contains:
 Levocetirizine Dihydrochloride USP 5 mg
 Montelukast Sodium USP Eq. to Montelukast 10 mg
 Excipients q.s.



Each Tablet contains:
 Glucosamine Sulphate Potassium Chloride 500 mg.
 Chondroitin Sulphate Sodium 200 mg.
 Calcium Carbonate (From Oyster Shell) Equivalent to Elemental Calcium 250 mg.
 Methyl Sulphonyl Methane (MSM) 200 mg.
 Vitamin D3 (Stabilized) 125 IU
 Excipients q.s.



Menthol BP.....	6% W/W
Methyl Salicylate BP.....	15% W/W
Eucalyptus Oil BP.....	2% W/W
Turpentina Oil BP.....	1.5% W/W
Gel Base.....	q.s.



Composition:
 Pudina (Mentha Arvensis) (Leaf)(Bh.N.) 6% w/w
 Eucalyptus Oil (Eucalyptus Globulus) (Oil) (Bh.N.) 2% w/w
 Turpentine Oil (Pinus Longifolia) (Oil)(Bh.N.) 1.5% w/w
 Gandhapura Oil (Gaultheria Fragrantissima) (Oil) (Bh.N.) 15% w/w
 Excipients q.s.



Composition:
 Each tablet contains:
 Montelukast sodium USP e.q.to montelukast 4 mg
 Levocetirizine Hydrochloride USP 2.5 mg
 Excipients q.s.



Composition:
 Each tablet contains:
 Lornoxicam 8 mg
 Thicochicoside 8 mg
 Excipients q.s.

WEST COAST PHARMACEUTICAL WORKS LIMITED

Meldi Estate, Near Prasang Party Plot, Sayona City Road, Gota, Ahmedabad - 382481, (Gujarat) INDIA
Tel.: +91 2717 241152/53 Mobile: +91 99090 05652/7949/5686, 90990 87107, 98796 10489
Email: export@westcoastin.com | info@westcoastin.com | Web: www.westcoastin.com

